



The FC-ID Series Industrial Cameras Specs

Version: 2.1
Release Date: October 2006

● The FC-ID series

The FC-ID series includes hi-resolution digital industrial cameras with mega pixels, which are appropriated for immobile-image-collecting systems of large imaging array and hi-accuracy, such as in the fields of science research, component inspection, microcopy medical imaging, industrial quality control, intelligent traffic systems, digital archiving and many others. Their prices are of great competition comparing with homologous cameras.

Your benefits include:

- ★ High resolution (over mega pixels);
- ★ High frame rate (up to 10fps @ 2048*1536);
- ★ Area of interest (AOI) scanning allows discretional image position and size under maximum and higher frame rates;
- ★ Algorithm based outstanding color fidelity guarantees excellent performance in the strictest situation (Only in color cameras);
- ★ Advanced interpolating Algorithm avoids artifacts;
- ★ Superior image quality of 54dB SNR improves your image processing results;
- ★ Time controllable ERS exposure provides maximum flexibility for immobile objects imaging;
- ★ External trigger with strobe lights provides excellent image quality of fast-moving objects (Only within ID320C);
- ★ Digital output allows collection-board free low-cost solution;
- ★ A small housing for easy integration;
- ★ Chinese/English OS of Windows98, Windows2000 and WindowsXP supported;
- ★ VC, VB, BC, DELPHI supported SDK are fully documented and allows easy redeveloping;
- ★ Customization available;

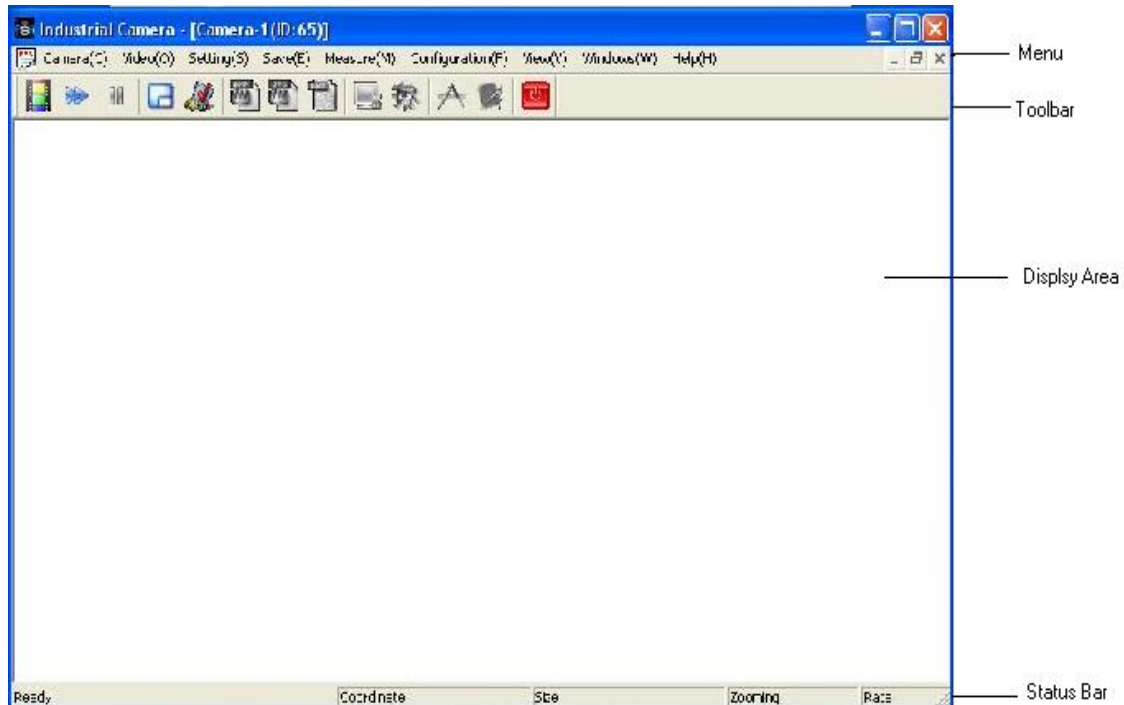
- **Technical Details**

Specifications

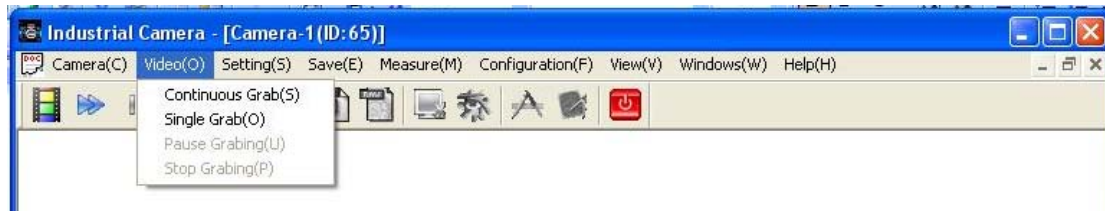
The FC-ID Series	FC-ID130M	FC-ID130C	FC-ID200C	FC-ID320C
Sensor Type	CMOS			
Video Output Format	Mono16: 10bit/pixel	Raw16: 10bit/pixel (R,G or B)		
Mono/Color	Mono	Color	Color	Color
Resolution	1280×1024	1280×1024	1600×1200	2048×1536
Sensor Optical size	1/2"	1/2"	1/2 "	1/2"
Frame Rate	30f/s @ 1280*1024	22f/s @ 1280*1024	18 f/s @ 1600*1200	10 f/s @ 2048*1536
SNR	54db	54db	54dB	46dB
Dynamic Range	60dB	60dB	60dB	60dB
Sensitivity	2.1 v/Lux-sec	1.6 v/Lux-sec	1.2 v/Lux-sec	1.2 v/Lux-sec
Exposure Time	31us~33ms	63us~66ms	81us~99ms	53us~83ms
Synchronization	Via External Trigger, via the USB bus or Free Run			
Exposure Time Control	Programmable via USB2.0 bus			
Gain Control	Programmable via USB2.0 bus			
Video Output Type	USB2.0			
Cable Length	5m with common cable 20m with special cable;			
Lens Mount Type	C-mount or CS-mount			
Power Supply	Via USB cable			

- **User Interface**

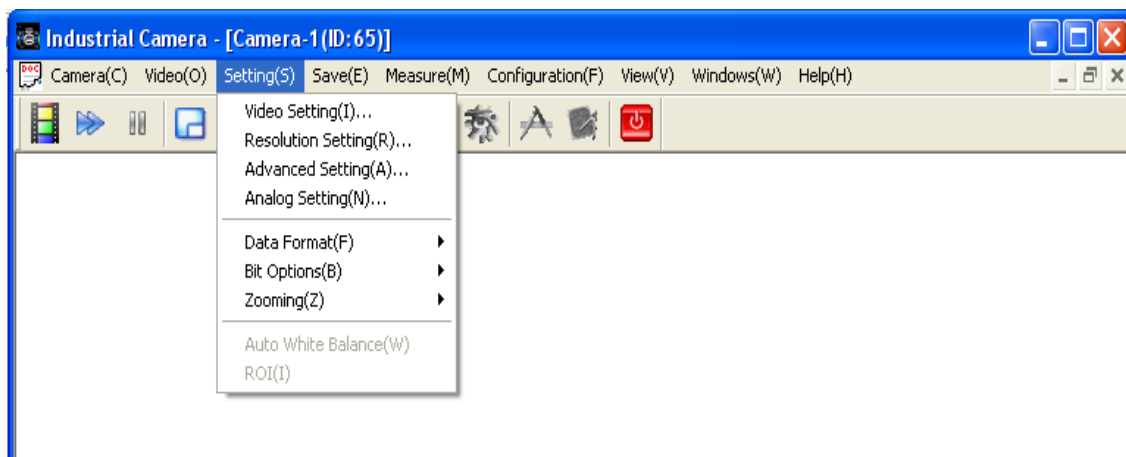
Together with the fully documented SDKs for redevelopment, we provide an excellent Demo program with almost all operations integrated. As soon as you get the cameras, you can experience the various functions and prominent performance in minutes.



Demo User Interface



Video Menu



Configurations Menu

- **Appearance**

The picture bellow is the view of the cameras.

The red light is the indicator for power supply inspection. If the camera is well, the red light will be always on when powered.

The green light is the working indicator. It will be glinting according to the frame rate when collecting images.



The FC-ID series are powered via USB cables, so the power interface is not necessary to be connected.

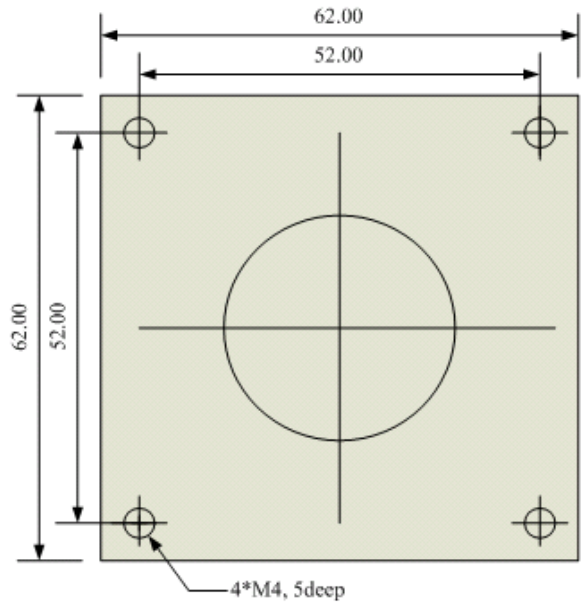
USB B male interface is used in the cameras. A customized 3m USB cable is of the standard accessories insuring the best performance of the USB bus.

External trigger input and strobe lights output interfaces is available and are both optical couple insulated.

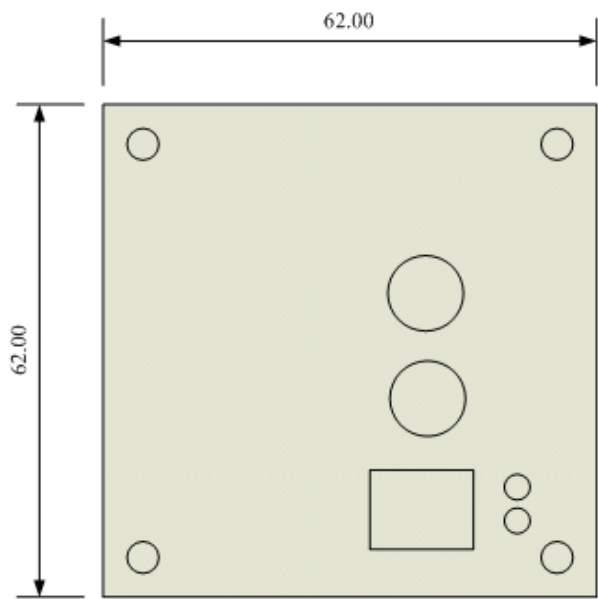
Power supply interface uses a two-core aerial plug and external trigger interface is a four-core aerial plug, both with self-lock function.

- **Dimensions (in mm)**

Front View



Rear View



Side View

